

DEFIANCE MEMORIAL AIRPORT



Basic Information

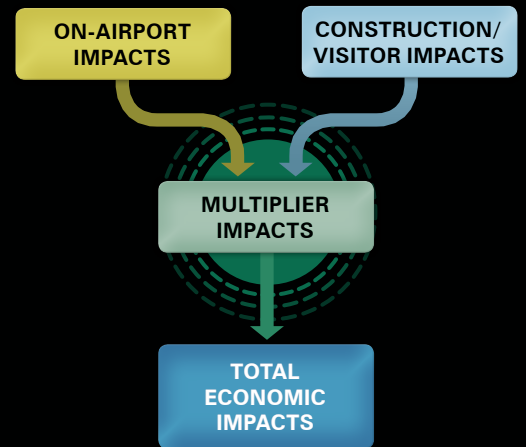
Defiance Memorial Airport is a general aviation airport located four miles northwest of Defiance, Ohio. Major facilities at the airport include a 4,199-foot primary runway (Runway 12/30) and a partial parallel taxiway. Operations at the airport are supported by non-precision approach and ASOS weather reporting. Other services include avgas, jet fuel, and maintenance. Defiance Memorial Airport is included in the National Plan of Integrated Airport Systems.

Qualitative Benefits

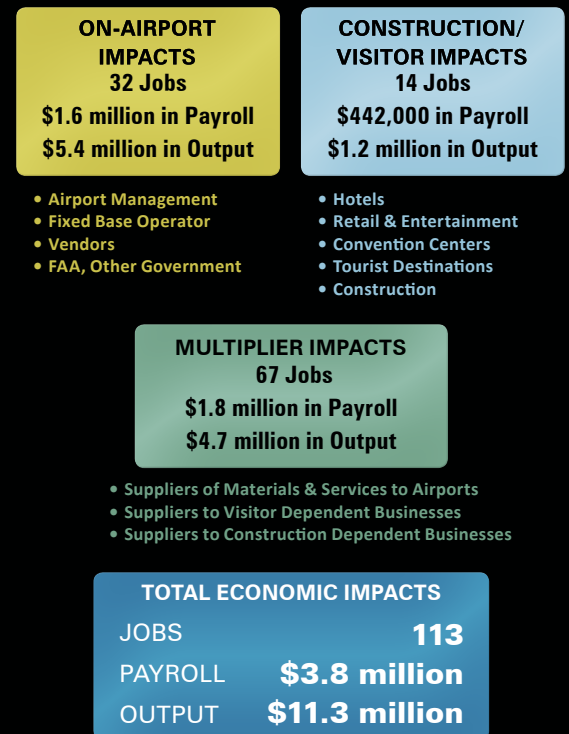
Defiance Memorial is home to two aviation-related businesses, TAS Aviation (FBO) and Promedica Defiance Regional Hospital, which provide flight training/aircraft rental and emergency air ambulance services, respectively. In addition, the airport is home to the corporate flight departments of Arend Enterprises, M&W Countertops, and Gaerte Ag. Other corporate user firms include GM Powertrain, Toledo Edison, Johns Manville, AEP, Fort Worth Tower, and Consolidated Grain & Barge. The most frequent general aviation operations at Defiance Memorial include aircraft charter, corporate flights, emergency medical services, flight training, and recreational flying.

The airport also maintains programs to enhance community outreach, including events such as Airport Days for local school groups, aviation merit badge training for Boy Scouts, annual Cessna Flyer Association fly-ins, and special events with civic organizations. The airport FBO, TAS Aviation, sponsors apprenticeship programs through Defiance College and Northwest State Community College.

Methodology



Defiance Memorial Airport Impacts



Impact Measures

Jobs measures the number of full-time equivalent (FTE) jobs related to airport activity including visitor-supported and on-airport construction jobs. A part-time employee counts as half of a full-time employee.

Payroll measures the total annual salary, wages, and

benefits paid to all workers whose livelihoods are directly attributable to airport activity.

Output measures the value of goods and services related to airports in Ohio. The output of on-airport businesses is typically assumed to be annual gross sales.

OHIO AIRPORTS ECONOMIC IMPACT STUDY



The Ohio Airport System

The Ohio system of 104 airports not only provides the state with a safe and efficient mode of transportation, it is also an important stimulus for economic growth and development. By providing aviation-related services, the system supports hundreds of thousands of jobs and produces billions of dollars in economic activity. The state's largest employers, and many smaller businesses, rely on aviation to rapidly transport personnel, equipment, and supplies.

Study Process

To better understand the relationship between Ohio's system of airports and the statewide economy, the Ohio Department of Transportation's (ODOT) Office of Aviation conducted an economic impact study of aviation using an FAA-approved methodology that has been applied to state airport systems throughout the United States. Funding for this study was provided by the FAA and the ODOT Office of Aviation.

Each Ohio system airport's total economic impact was quantified in terms of jobs, payroll, and output. Through a comprehensive survey process, the direct economic impacts related to on-airport business tenants and visitor expenditures were determined for each system airport. The multiplier effect of these impacts was then calculated to ascertain the total airport-related impacts.

TOTAL JOBS **123,456**

TOTAL PAYROLL **\$4.2 billion**

TOTAL OUTPUT **\$13.3 billion**

Statewide Benefits from Aviation

More than 120,000 jobs can be tied to the airports of Ohio. These employees receive \$4.2 billion in payroll and benefits and generate \$13.3 billion in economic activity. In addition to economic impacts, the system of airports provides numerous benefits that enhance the quality of life, health, safety, and welfare of Ohioans.

The state's network of seven commercial service airports provides access to regional, national, and international markets. Nearly 10 million enplaned passengers used the Ohio system of commercial service airports in 2012 to reach these destinations. In total, Ohio commercial service airports support nearly 106,000 jobs with annual earnings of approximately \$3.5 billion and \$11.5 billion in annual economic activity.

