

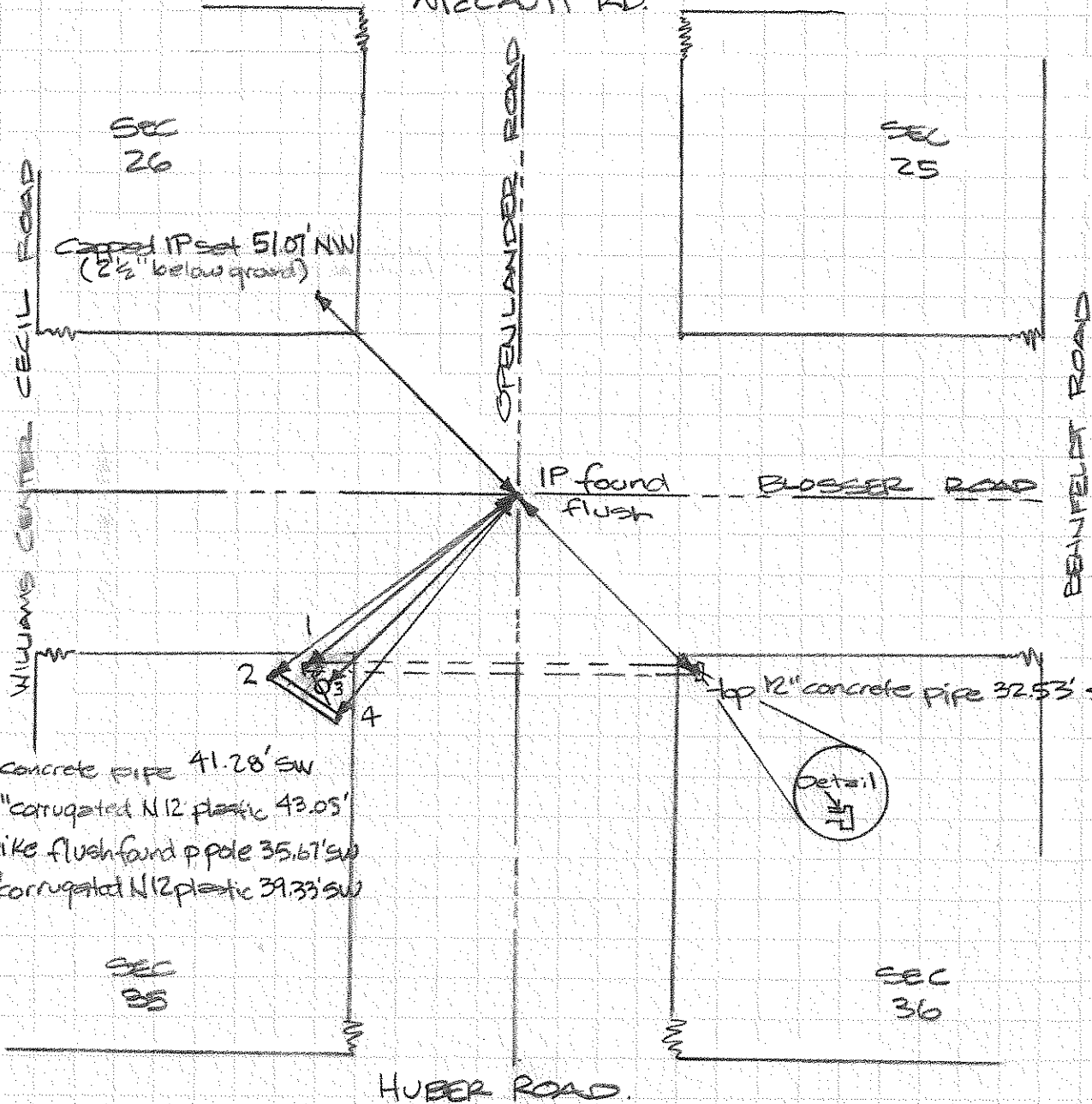
FARMER TOWNSHIP

RUB, JHT

4/24/17

#1358

McCAUIT RD.



Capd IP set 51.01' NW
(2 1/2" below ground)

SEC 26

SEC 25

WILLIAMS CENTER CECIL ROAD

OPENLANDER ROAD

BENFIELD ROAD

IP found flush

BLOSSER ROAD

1
2
3
4

top 12" concrete pipe 32.53' SE.

Detail

- 1. top 12" concrete pipe 41.28' SW
- 2. top 24" corrugated N12 plastic 43.05'
- 3. RA^{NE} spike flush found p pole 35.67' SW
- 4. top 24" corrugated N12 plastic 39.33' SW

SEC 35

SEC 36

HUBER ROAD

