

Point Number: 34171

Observation: JJL

Date: 8-17-05

Township: Defiance

Section: 17

Monument Description: Disc in NW turndown for G-Rail

Monument Location: SR 111 just south of Cromley Rd. 23.0' west of SR 111 CL. 149.5' southwest of Cromley CL.

Sketch:

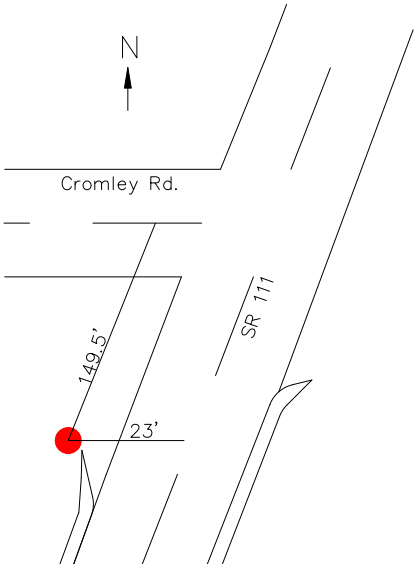
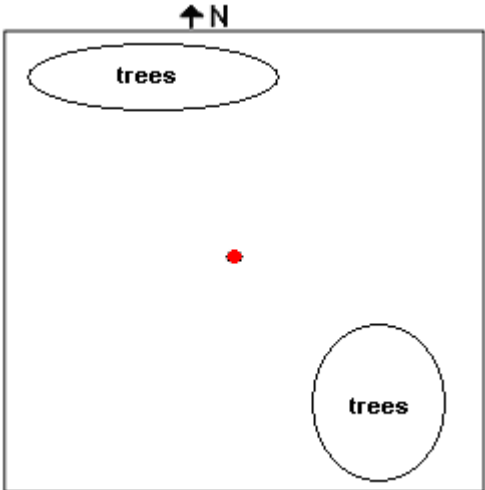


Photo:



Sky Observation Chart:



Defiance County GPS Coordinates
 Northing—573068.846 sft
 Easting—1438121.591 sft
 Elevation— 696.29 ft

30°-- North
 20° -- Southeast