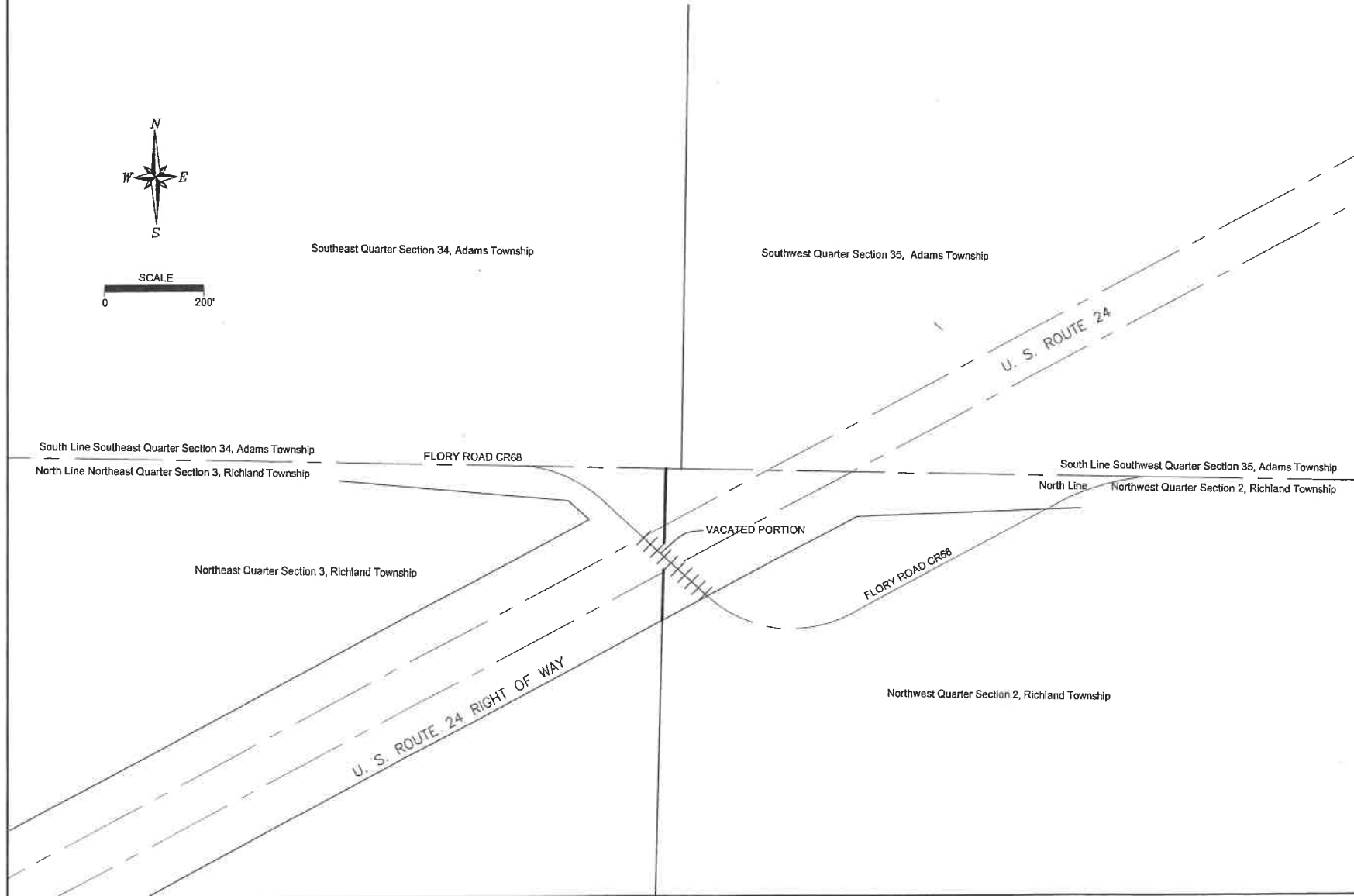


Vacation of Portion of Access Rights - Flory Road Section 2 & Section 3, Richland Township, Town 4 North, Range 5 East Defiance County, Ohio



SCALE
0 200'



Plat prepared by
The Defiance County Engineer's Office
Warren Schlatter
Warren Schlatter P.E., P.S. County Engineer

This plat shows the vacation of the access rights to a portion of Flory Road CR68 from the centerline of westbound US Route 24 to the south limited access right of way of US Route 24.

The original location of CR68 is recorded in the Defiance County Commissioners Journals in the resolution dated February 6, 1851 in Book 1, Page 104. Right of way was purchased in 1962 and is not affected by this vacation.

This vacation was approved by the Defiance County Commissioners by a resolution dated December 22, 2022 and is recorded in Volume 168 Resolution 22-12-503 of the Defiance County Commissioners Journals.

DEFIANCE COUNTY AUDITOR CERTIFICATION
I, the Defiance County Auditor, do hereby acknowledge receipt of the Plat.

Jill R. Little
Jill Little, Defiance County Auditor

4-21-26
Date

#13317
Filed and Recorded this *21st* day of *April*, *2026* at *3:15pm*
Plat Book Volume *15*, Page *50*

Cecilia Persons
Defiance County Recorder
\$0.00