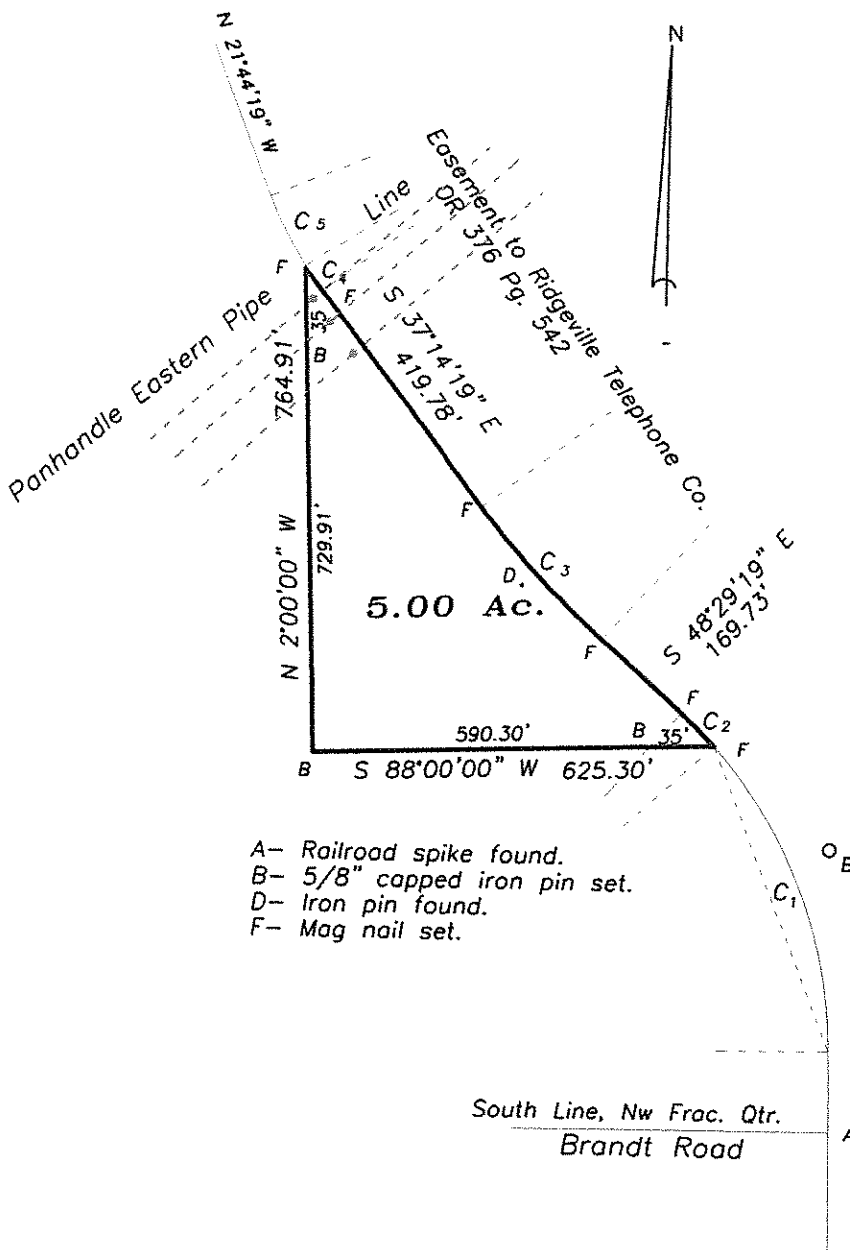


Plat of Survey

Being a part of the Northwest fractional quarter (1/4) of Section 2,
Township 5 North, Range 5 East, Adams Township, Defiance County, Ohio.

For... Ridgeholdings, LLC OR 322 Pg. 1097

See 1930 Adams Ridge Road Plans



C₁ = 41°41'03"
R = 716.20'
L = 521.05'
Ch Br. = N 21°49'46\" W
Ch Dist. = 509.63'

C₂ = 05°49'01"
R = 816.20'
L = 72.71'
Ch Br. = S 45°34'48\" E
Ch. Dist. = 72.68'

C₃ = 11°15'00"
R = 1432.40'
L = 281.25'
Ch. Br. = S 42°51'49\" E
Ch. Dist. = 280.80'

C₄ = 04°19'02"
R = 636.62'
L = 47.97'
Ch Br. = S 35°04'48\" E
Ch Dist. = 47.96'

C₅ = 11°10'58"
R = 636.62'
L = 124.25'
Ch. Br. = S 27°19'48\" E
Ch. Dist. = 124.06'

- A - Railroad spike found.
- B - 5/8\" capped iron pin set.
- D - Iron pin found.
- F - Mag nail set.

I hereby declare that I did perform this survey and that it is correct to the best of my knowledge and belief.

1 - 10-G-21

Thomas J. Henry
Registered Surveyor No. 6787

