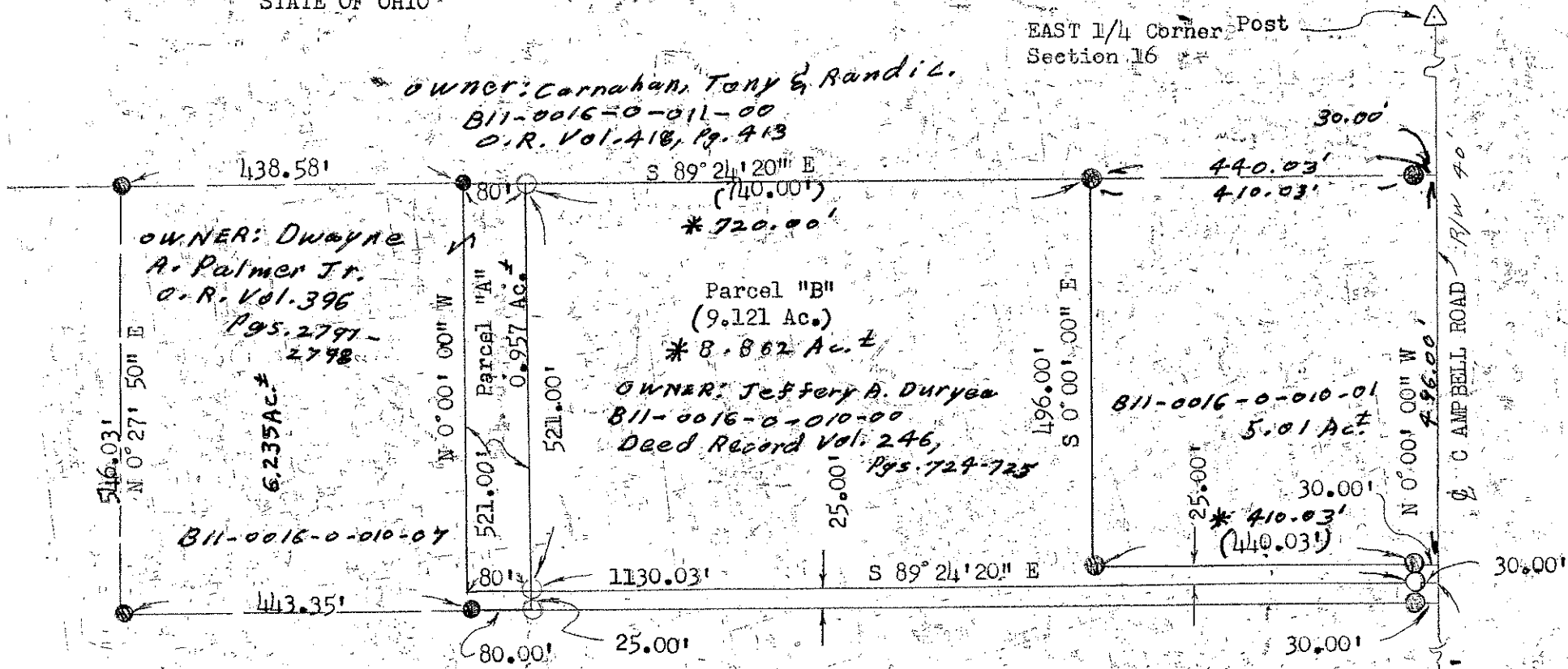


PLAT OF SURVEY (Corrected) July 5th 2019
Revised

SURVEY OF PART OF THE SOUTH 1/2 OF THE SOUTHEAST 1/4 OF SECTION 16
TOWNSHIP 3 NORTH, RANGE 4 EAST, DEFIANCE TOWNSHIP, DEFIANCE COUNTY,
STATE OF OHIO

EAST 1/4 Corner Post
Section 16



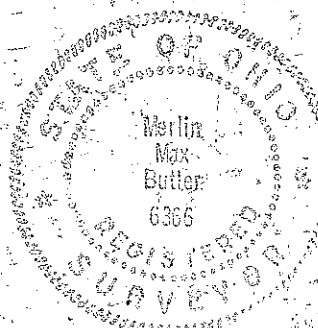
I, A SURVEYOR DULY REGISTERED AS REQUIRED BY LAW IN THE STATE OF OHIO, HEREBY CERTIFY THIS PLAT TO BE TRUE AND CORRECT TO THE BEST OF MY KNOWLEDGE AND BELIEF AND THAT MONUMENTS HAVE BEEN SET AS SHOWN HEREON.

Merlin Max Butler, P.S.
REGISTERED SURVEYOR NO. 6366
MERLIN MAX BUTLER

Surveyed For Harry M. Sisco
March 18, 1978

(Corrected) July 5th 2019
Revised

Merlin Max Butler
Registered Surveyor No. 6366
Merlin Max Butler



Section 16
SOUTHEAST
CORNER POST

- △ CORNER STONE FOUND
 - IRON PIN FOUND
 - ◻ 5/8" R. BAR SET
 - * corrected distance on Access
 - (xx) Prior Record
- SCALE 1"=20'