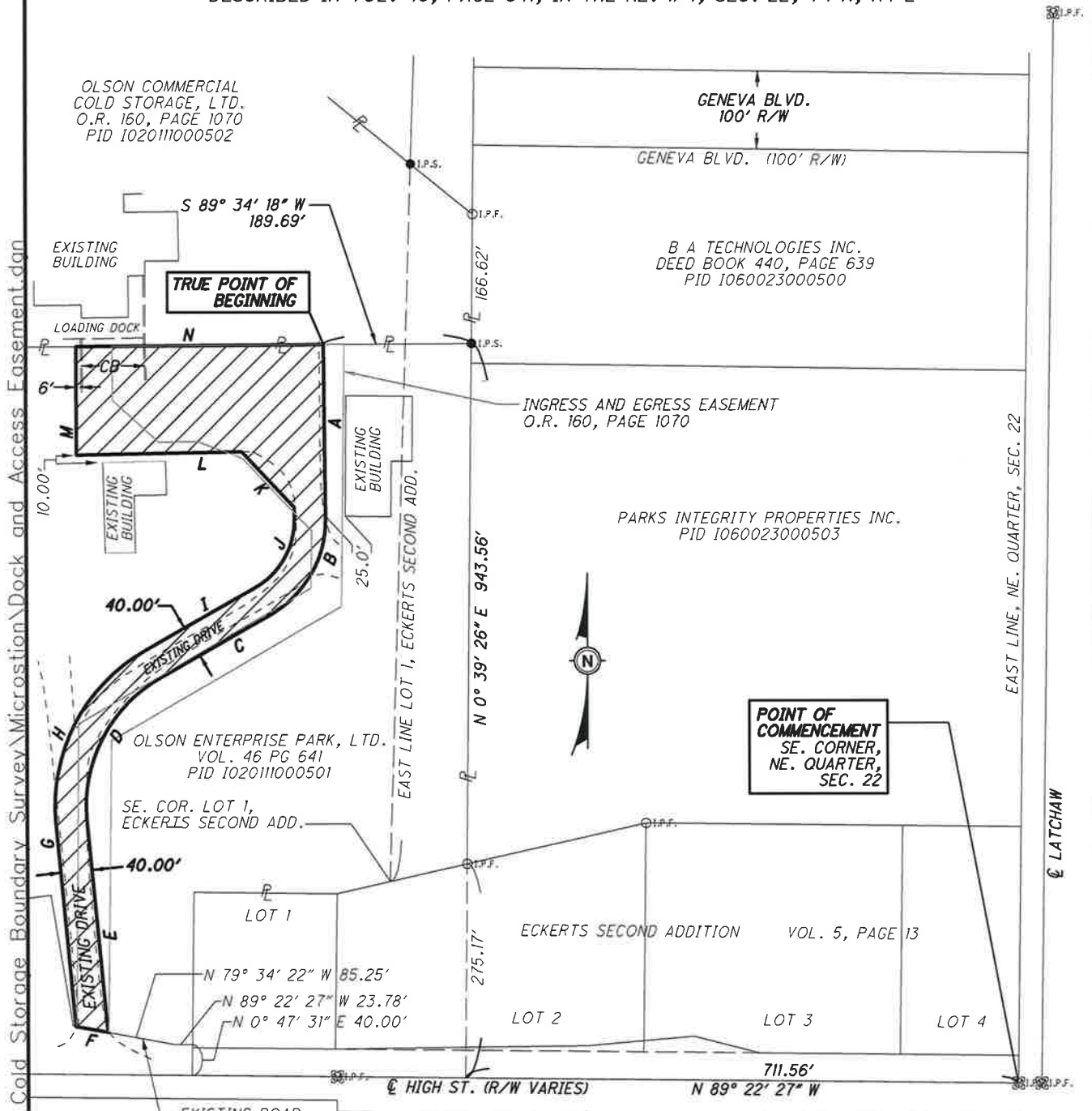


EXHIBIT "A"

PART OF LOT 1 OF ECKERTS SECOND ADDITION (VOL. 5 PAGE 24) TO THE CITY OF DEFIANCE, OHIO, PART OF LAND CONVEYED TO OLSON ENTERPRISE PARK, LTD. DESCRIBED IN VOL. 46, PAGE 641, IN THE NE. 1/4, SEC. 22, T4 N, R4 E



ACCESS EASEMENT 1.868 ACRES	
SHOWN AS	
A	S 0°32' 00" E 222.31'
B	Delta = 60°56' 38" Curve Length = 151.04' Radius = 142.00' Chord Bear = S 29°56' 19" W Chord Len = 144.02'
C	S 60°24' 38" W 161.10'
D	Delta = 65°51' 09" Length = 218.38' Radius = 190.00' Chord Bear = S 27°29' 04" W Chord Len = 206.55'
E	S 5°26' 31" E 273.91'
F	N 79°34' 22" W 41.58'
G	N 5°26' 31" W 262.54'
H	Delta = 65°51' 09" Length = 264.35' Radius = 230.00' Chord Bear = N 27°29' 04" E Chord Len = 250.04'
I	N 60°24' 38" E 161.10'
J	Delta = 68°17' 09" Length = 123.54' Radius = 103.65' Chord Bear = N 26°16' 04" E Chord Len = 116.35'
K	N 43°29' 13" W 97.89'
L	S 88°50' 33" W 211.47'
M	N 0°14' 21" W 138.87'
N	N 89°34' 27" E 317.45'

Drawn: KCC 12-13-2022 Job No.: 20232417

P:\000 KLF Projects\0 2023 Projects\20232417 - Olson Cold Storage Boundary Survey\Microstation\Dock and Access Easement.dgn

EXHIBIT "A"

PART OF THE NE. 1/4, SEC. 22 OF T 4 N, R 4 E,
IN THE CITY OF DEFIANCE, OHIO, AND PART OF
LAND CONVEYED TO OLSON COMMERCIAL COLD STORAGE, LTD.
AND DESCRIBED IN VOL. 188, PAGE 278

OLSON COMMERCIAL
COLD STORAGE, LTD.
O.R. 188, PAGE 278
PID 1020111000501

OLSON COMMERCIAL
COLD STORAGE, LTD.
O.R. 188, PAGE 278
PID 1020111000500

OLSON COMMERCIAL
COLD STORAGE, LTD.
O.R. 160, PAGE 1070
PID 1020111000502

ECKERTS SECOND ADD.
VOL. 5, PAGE 24

OLSON ENTERPRISE
PARK, LTD.
VOL. 46 PG 641
PID 1020111000501


SE. COR. LOT 1,
ECKERTS SECOND ADD.

ECKERTS FIRST ADDITION VOL. 5, PAGE 13

B A TECHNOLOGIES INC.
DEED BOOK 396, PAGE 2069
PID 1060023000505


B A TECHNOLOGIES INC.
DEED BOOK 440, PAGE 639
PID 1060023000504

PARKS INTEGRITY PROPERTIES INC.
PID 1060023000503

100' WIDE ACCESS EASEMENT	
0.181 ACRES	
EASEMENT SHOWN AS 	
E8	N 89° 12' 02" W 79.83'
E9	N 1° 48' 11" E 100.02'
E10	S 89° 12' 02" E 77.83'
E11	S 0° 39' 26" W 100.00'

POINT OF COMMENCEMENT
SE. CORNER,
NE. QUARTER,
SEC. 22

Bearings are based on the Ohio State
Plane Coordinate System, NAD 83, Ohio
North Zone and derived from GPS using
the Ohio Department of Transportation
V.R.S. Network. I hereby certify that
the easement shown hereon is based on
an actual field survey performed
September and October of 2022 and
was under my supervision.


Kevin Canavan, P.S. Date 12-14-2022
Ohio Professional Surveyor S-7448



R = PROPERTY LINE LABEL
Z = OWNERSHIP HOOK

1" = 200'



POGGE MEYER DESIGN GROUP, INC.
A KLEINFELDER COMPANY
ARCHITECTS - ENGINEERS - PLANNERS
1168 NORTH MAIN STREET
BOWLING GREEN, OHIO 43402
PH. : (419) 352-7537

100' WIDE ACCESS EASEMENT

Drawn: KCC 12-12-2022 Job No.: 20232417

P:\000_KLF_Projects\0_2023_Projects\20232417 - Olson Cold Storage Boundary Survey\Microstation\Geneva Blvd Easement\12142022 8:32:11 AM