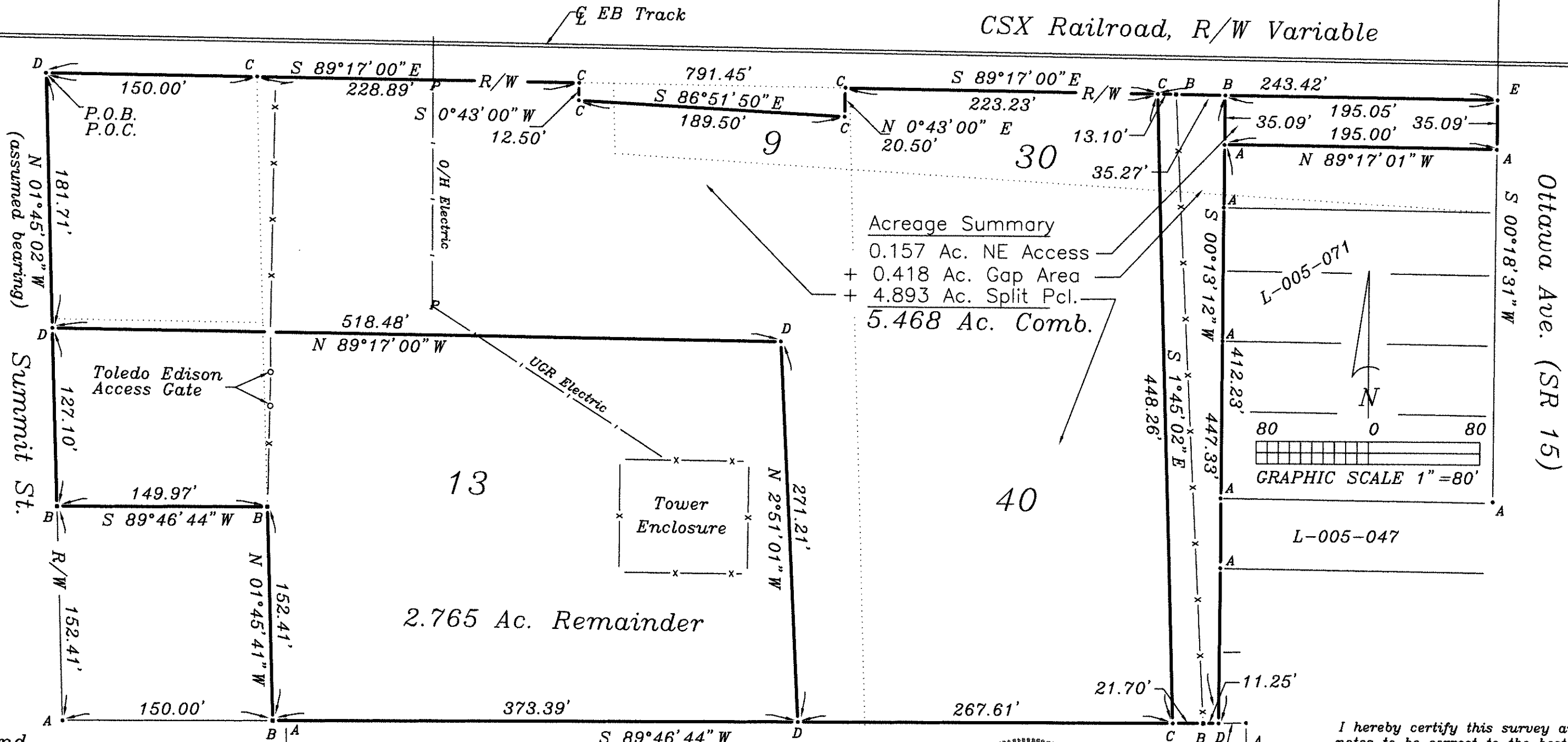


# Plat of Survey

Being part of Lots 9, 13, 30 and 40, of the Auditor's Plat of Lots East of the Auglaize River, City of Defiance, Defiance County, Ohio.

For: The Toledo Edison Co.  
(First Energy Corp.)  
Deed Ref: Vol. 103, Pg. 207

CSX Railroad, R/W Variable



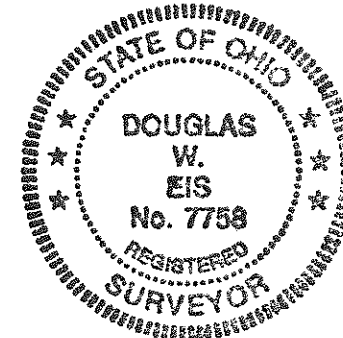
**Acreage Summary**  
 0.157 Ac. NE Access  
 + 0.418 Ac. Gap Area  
 + 4.893 Ac. Split Pcl.  
**5.468 Ac. Comb.**

**2.765 Ac. Remainder**

- Legend**
- A = Iron pin found
  - B = Edison Monument found
  - C = Point Established
  - D = Iron pin and cap set
  - E = Mag nail set
  - P.O.B = Point of Beginning
  - P.O.C. = Point of Commencement

**Plat Reference:**  
 Auditor's Plat of lots  
 Plat Bk 4, Pg 29

**Survey Reference:**  
 L-005-047  
 L-005-071  
 Edison Dwg. # 34



I hereby certify this survey and notes to be correct to the best of my knowledge.

*Douglas W. Eis*  
 Douglas W. Eis  
 Registered Surveyor No. 7758  
 D.W. Eis Surveying  
 16-883 St. Rt. 281  
 Holgate, Ohio 43527  
 (419) 762-5468  
 November 29, 2018  
 Survey No. B2755-D-CD-12-31-18