

THIS SURVEY WAS PERFORMED WITHOUT THE BENEFIT OF A TITLE EXAMINATION. BEYOND THE DEED DOCUMENTS CITED ON THE SURVEY DRAWING THERE MAY BE RECORDED OR UNRECORDED EASEMENTS AND/OR ENCUMBRANCES BENEFITING OR ENCUMBERING THE SURVEYED PROPERTY WHICH ARE NOT SHOWN ON THIS DRAWING.

LARRY L. HAMMAN, ETAL
OR VOL 360 - PG 1869 (TRACT THREE)
41.09 ACRES (PER TAX RECORD)
PARCEL NO. H210003000200

JOSEPH A & SCOTTIE J HAMMAN
OR VOL 449 - PG 2352
(41.1 ACRES RECORDED - NW 1/4, NW 1/4)
22.464 ACRES (PER TAX RECORD)
PARCEL NO. H210002000500

TWIN LAKES FARMS, INC.
DV 232 - PG 272
PARCEL NO. H210002000501
18.636 ACRES
NW 1/4, SEC. 2
SURVEY VOL. 11-3-6

SW CORNER NW 1/4, NW 1/4 SECTION 2 (POINT ESTABLISHED AS CALCULATED SURVEY VOL. 11-3-6)
SW CORNER NW 1/4, NW 1/4 SECTION 2 (POINT ESTABLISHED SURVEY VOL. 11-3-6)

TWIN LAKES FARMS, INC.
DV 232 - PG 272
PARCEL NO. H210003000100
27.026 ACRES
NE 1/4, SEC. 3
SURVEY VOL. 11-3-6

S. & S. WALKUP
OR VOL 367 - PG 189
PARCEL NO. H210002000401
72.336 ACRES
SW 1/4, NW 1/4
PT. PARCEL NO. H210002000401
41.542 ACRES

TWIN LAKES FARMS, INC.
DV 229 - PG 284 (TRACT III)
PARCEL NO. H210003000300
40 ACRES (PER TAX RECORD)
NE 1/4, SE 1/4 SECTION 3

TWIN LAKES FARMS, INC.
DV 229 - PG 284 (TRACT III)
PARCEL NO. H210002000800
40 ACRES (PER TAX RECORD)
NW 1/4, SW 1/4

MARK STARK
OR VOL 429 - PG 1566
1.0 ACRES PN. H210002000405

WILLIAMS CO. DEFIANCE CO.
MATTHEW M. & ANNE MARIE MICHAELS
DV 263 - PG 283
2.000 AC. (PER TAX RECORD)
PARCEL NO. H210002000402

ROGER D BARTLETT JR
OR VOL 421 - PG 663
PARCEL NO. H210002000401
5.193 ACRES

S. & S. WALKUP
OR VOL 367 - PG 189
PARCEL NO. H210002000401
72.336 ACRES (PER DEED)
67.143 ACRES (PER TAX RECORD)

SW CORNER NE 1/4, NW 1/4 SECTION 2 & NW CORNER SE 1/4, NW 1/4 SECTION 2
PT. PARCEL NO. H210002000401
25.601 ACRES

INGRESS/EGRESS EASEMENT
OR VOL 371 - PG 1764 (0.029 AC.)
PT. PARCEL NO. H210002000501

LINE TABLE (EASEMENT)
L1 N 00°11'13" W 50.00'
E2 N 44°10'59" E 71.48'
E3 S 88°33'11" W 50.00'

JASON JOHN LEPELMEIER TRUSTEES ETAL
OR VOL 454 - PG 1105
78.47 ACRES (PER TAX RECORD)
PARCEL NO. H210002000601

SE 1/4, NW 1/4

PARCEL NO. H210002000601

FILE NAME: 26-155_WALKUP_RDL-5-22-26.scj DATE: 5/26/26

C/L WILLIAMS-DEFIANCE CO. LINE ROAD

NORTH LINE, NW 1/4, SEC. 2

STONE FOUND ADJACENT TO 5/8" REBAR W/ID CAP

JARED W & ASHLEY L REDIGER
OR VOL 468 - PG 2963
2.29 ACRES PN. H210002000404

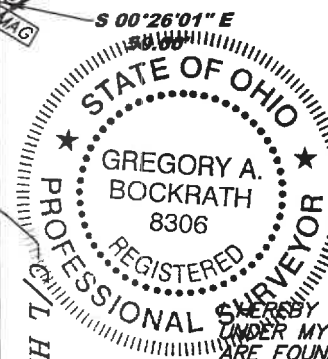
BRANDON S CALLAWAY ETAL
OR VOL 419 - PG 2227
2.00 ACRES PN. H210002000400
SURVEY VOL. 11-2-9

ASHLEY M PATTON ETAL
OR VOL 469 - PG 2665
1.00 ACRES PN. H210002000403
SURVEY VOL. 11-2-7

POB - 25.601 AC.

NE 1/4, NW 1/4

POB - 41.542 AC.



I HEREBY CERTIFY THIS TO BE A SURVEY MADE UNDER MY SUPERVISION AND THAT THE MONUMENTS ARE FOUND AND/OR SET AS INDICATED.

5-26-26
Date

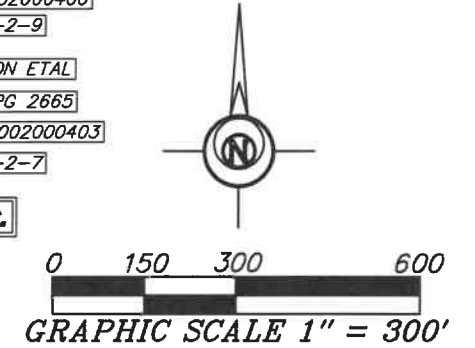
Gregory A. Bockrath, P.S.
Registered Surveyor No. 8306.
115 S. Fair Avenue, Suite A
Ottawa, Ohio 45875

SURVEY FOR:

SHEA WALKUP

PART OF THE NE 1/4 OF THE NW 1/4 & ALL OF THE SW 1/4 OF THE NW 1/4 OF SECTION 2, T5N - R1E, MILFORD TOWNSHIP, DEFIANCE COUNTY, OHIO

Bockrath & Associates
Engineering and Surveying, LLC
115 S. Fair Avenue, Suite A - Ottawa - Ohio
Phone: 419.523.5789



LEGEND

- 5/8 INCH REBAR W/ID CAP SET
- 5/8 INCH REBAR W/ID CAP FOUND
- 5/8 INCH REBAR FOUND
- 3/4 INCH REBAR FOUND
- PK PK NAIL FOUND
- MAGS MAG NAIL SET
- MAG MAG NAIL FOUND

LINE TABLE

L1 N 00°11'13" W 50.00'