

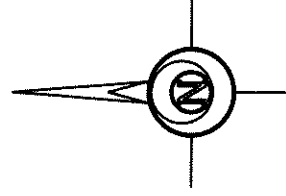
~SR 249~

S 88°51'47" E 1323.01'  
NORTH LINE, W 1/2, NW 1/4, SECTION 24

NW CORNER,  
NW 1/4,  
SECTION 24.

S 88°51'47" E  
3971.01'

NE CORNER,  
W 1/2, NW 1/4,  
SECTION 24.



0 75 150 300  
GRAPHIC SCALE 1" = 150'

**LEGEND**

- 5/8 INCH REBAR WITH ID CAP SET
- 5/8 INCH REBAR WITH ID CAP FOUND
- ⊙ 3/8 INCH REBAR FOUND
- ⊗ RAILROAD SPIKE FOUND
- MAG MAG NAIL SET
- POB POINT OF BEGINNING
- R RECORDED
- M MEASURED

IRIS R. KNISELY

OR VOL 276 - PG 1031  
46 ACRES (RECORDED)  
PN. H22-0024-0-005-00

NOAH J. & MEGAN GERIG  
OR VOL 407 - PG 876  
20 ACRES (RECORDED)  
PN. H22-0024-0-006-00

**LINE TABLE**

COURSE	BEARING	DISTANCE
1	S 87°48'22" E	25.25'
2	N 66°23'14" E	99.62'
3	N 47°58'23" E	53.03'
4	N 63°27'19" E	25.60'
5	N 79°36'10" E	53.76'
6	S 85°49'10" E	36.21'
7	N 78°08'08" E	17.12'
8	N 53°05'17" E	8.79'
9	N 00°00'00" E	12.32'
10	N 24°31'21" E	21.30'
11	N 59°55'05" E	19.31'
12	N 17°24'35" E	73.31'

NORTH LINE 20 AC.

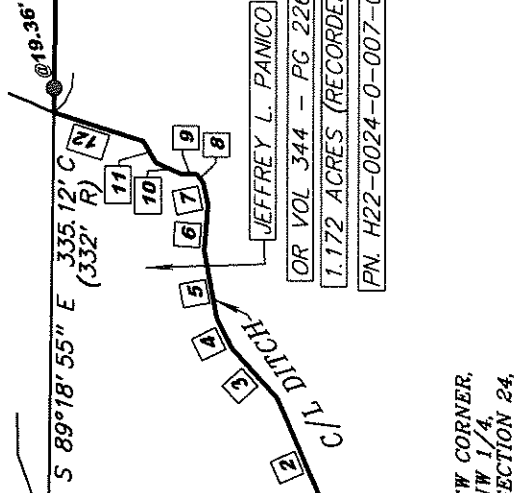
WEST LINE, NW 1/4, SECTION 24  
N 01°02'48" E 2239.91'

EAST LINE, W 1/2, NW 1/4, SECTION 24  
S 01°01'37" W 2229.47'

NOTE: SURVEY BEARINGS BASED ON OHIO NORTH  
ZONE STATE PLANE COORDINATES OBTAINED FROM  
THE OHIO DOT VRS NETWORK

~CICERO ROAD~

394.85' CALC. (396' R)  
MAG N 01°02'48" E  
(ASSUMED BEARING)  
217.11' C  
N 01°02'48" E  
(224' R)  
MAG



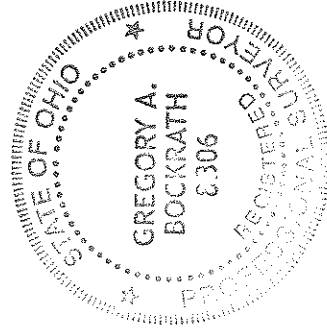
JEFFREY L. PANICO  
OR VOL 344 - PG 2267  
1.172 ACRES (RECORDED)  
PN. H22-0024-0-007-00

1323.80' CALC. (1320' R)  
S 89°18'55" E 988.68'

10.877 ACRES  
ALL PN. H22-0024-0-007-01  
POLLY SHOLL  
OR VOL 397 - PG 1680  
10 ACRES (PER TAX RECORD)  
PN. H22-0024-0-007-01

SOUTH LINE, W 1/2, NW 1/4, SECTION 24  
N 89°18'55" W 1323.94' M (1320' R)

SW CORNER,  
NW 1/4,  
SECTION 24.



THIS SURVEY WAS PERFORMED WITHOUT THE  
BENEFIT OF A TITLE EXAMINATION. BEYOND  
THE DEED DOCUMENTS CITED ON THE SURVEY  
DRAWING THERE MAY BE RECORDED OR UN-  
RECORDED EASEMENTS AND/OR  
ENCUMBRANCES BENEFITING OR ENCUMBERING  
THE SURVEYED PROPERTY WHICH ARE NOT  
SHOWN ON THIS DRAWING.

I HEREBY CERTIFY THIS TO BE A SURVEY MADE UNDER MY SUPERVISION  
AND THAT THE MONUMENTS ARE FOUND AND/OR SET AS INDICATED.

Gregory A. Bockrath, P.S.  
Registered Surveyor No. 8306.  
115 S. Fair Avenue, Suite A  
Ottawa, Ohio 45875  
419-523-5789

5-21-19  
Date

SW CORNER,  
SW 1/4,  
SECTION 24.

RAYMOND D. CONKEY, JR. & LINDA K. CONKEY  
OR VOL 377 - PG 228 (TRACT 1)  
80 ACRES (RECORDED)  
PN. H22-0024-0-008-00  
W 1/2, SW 1/4

REFER TO SURVEY  
VOL. 11-24-08  
DOUGLAS W. EIS SURVEY  
DATED: OCT. 2, 2003

STEWART F. & SUE L.  
TAYLOR  
OR VOL 269 - PG 2762  
103.893 ACRES (RECORDED)  
55.872 ACRES (PER TAX RECORD)  
PN. H22-0024-0-009-00  
SURVEY VOL. 11-24-08  
PT. E 1/2, SW 1/4 & PT. W 1/2, SE 1/4

SURVEY PLAT FOR: POLLY SHOLL  
PART OF THE NORTHWEST 1/4  
OF SECTION 24, T5N - R1E,  
MILFORD TOWNSHIP,  
DEFIANCE COUNTY, OHIO

BOCKRATH & ASSOCIATES  
ENGINEERING and SURVEYING, LLC  
115 S. FAIR AVENUE SUITE A - OTTAWA, OH 45875  
PHONE: 419-523-5789 - FAX: 419-523-5799