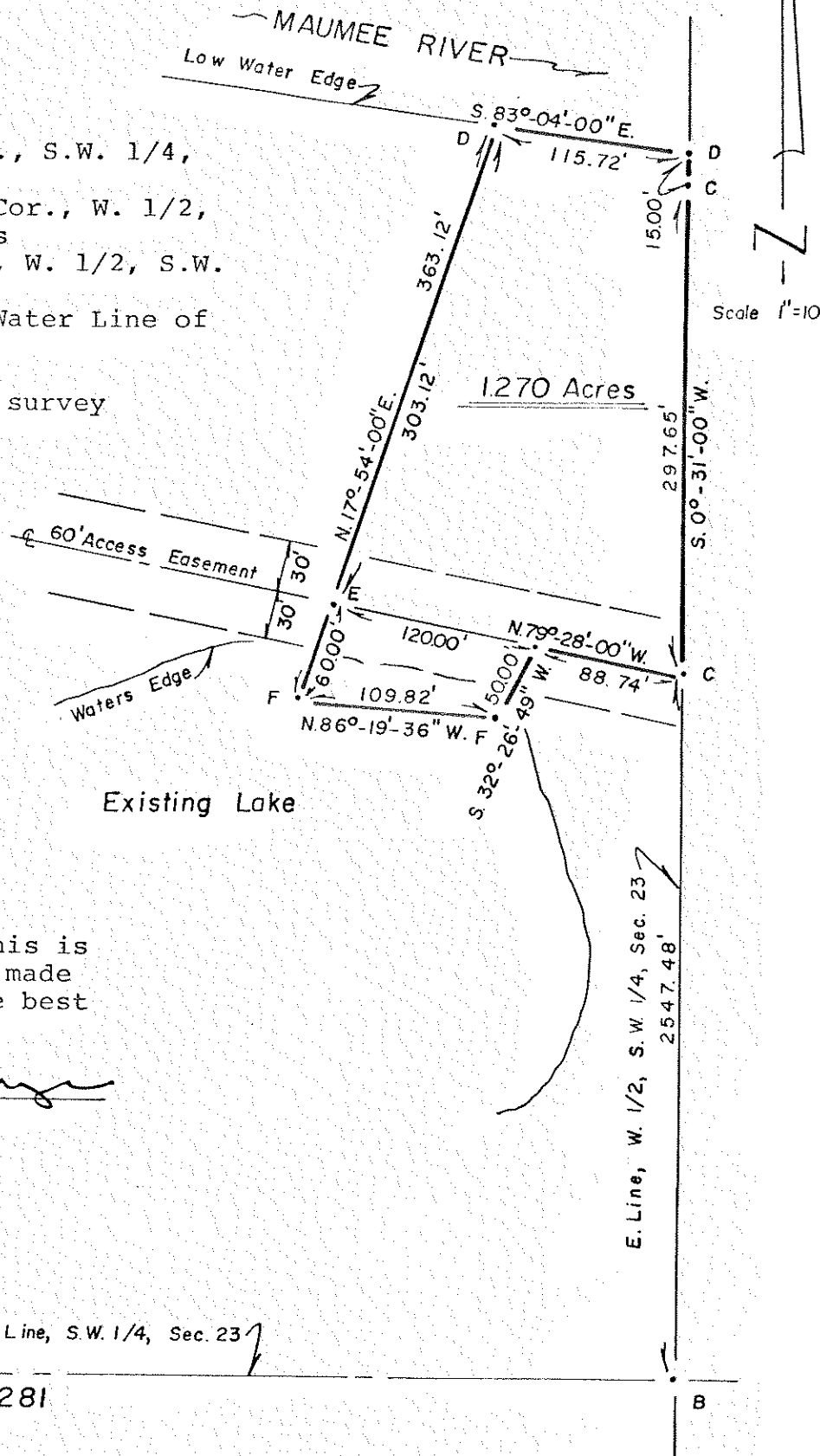


SURVEY OF PART OF THE WEST HALF OF THE SOUTHWEST QUARTER OF SECTION 23, TOWNSHIP 4 NORTH, RANGE 3 EAST, RICHLAND TOWNSHIP, DEFIANCE COUNTY, OHIO

For: Groll Realty

- A = Monument Stone at S.W. Cor., S.W. 1/4, Sec. 23
- B = Point established at S.E. Cor., W. 1/2, S.W. 1/4, Sec. 23 by others
- C = Iron Pins found on W. Line, W. 1/2, S.W. 1/4, Sec. 23
- D = Points established on Low Water Line of Maumee River by others
- E = Iron Pins set by others
- F = Points established by this survey



I hereby certify that this is a true copy of a survey made by me and to true to the best of my knowledge.

Robert B. Ernsberger

Robert B. Ernsberger
Reg. Surveyor #5520

Surveyed 4-11-79

A

S.R. 281

B

Jw