

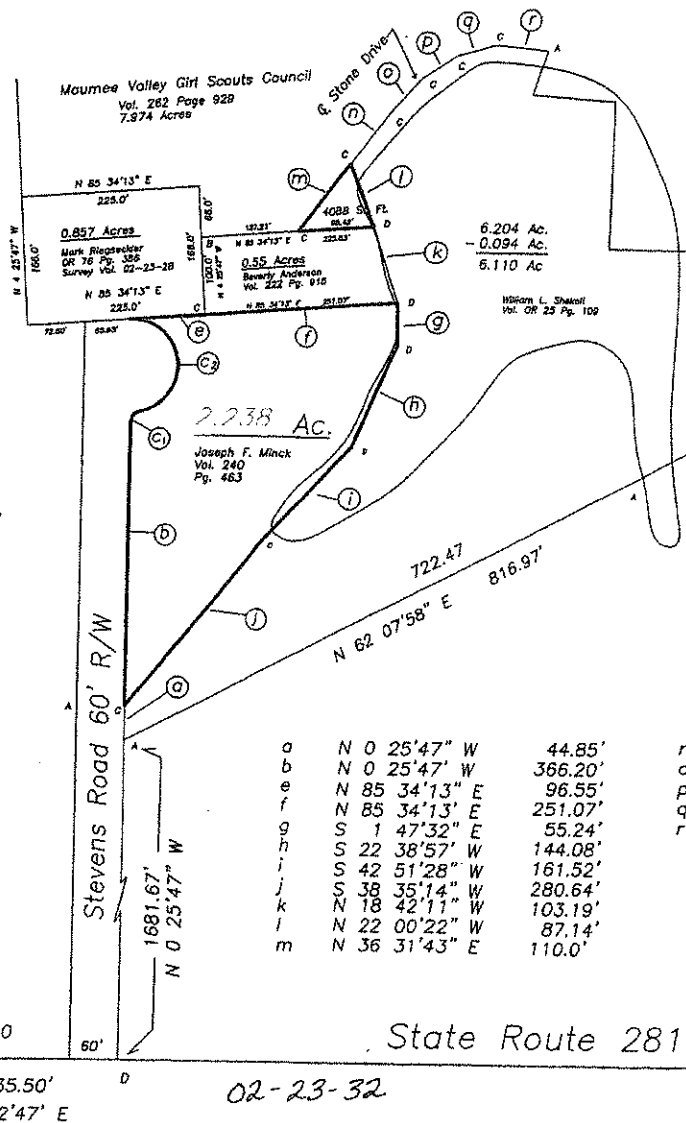
Plat of Survey

Being a part of the Southwest quarter (1/4)
of Section 23, Township 4 North, Range 5
East, Richland Township, Defiance County, Ohio.

For... Joseph F. Minck & William L. Shekell

Legend

- A- Iron pin found.
- B- Capped iron pin found.
- C- Capped iron pin set.
- D- Point established.



C₁ Data
 $\Delta = 90\ 00\ 00'$
 $R = 15.0'$
 $L = 23.56'$
 $Ch. Dist. = 21.21'$
 $Ch. Br. = N\ 44\ 34\ 13''\ E$

C₂ Data
 $\Delta = 169\ 31\ 18''$
 $R = 60.0'$
 $L = 177.52'$
 $Ch. Dist. = 119.50'$
 $Ch. Br. = N\ 9\ 40\ 01''\ W$

I hereby certify that I did preform this survey
and that it is correct to the best of my
knowledge and belief.

Thomas J Henry
Registered Surveyor No. 6787

Ref. Surveys
 Vol. 2 Pg. 23-23
 Vol. 2 Pg. 23-19
 Vol. 2 Pg. 23-28
 Vol. 2 Pg. 23-24
 Vol. 2 Pg. 23-30
 Dedication Plat for
 Stevens Road
 December 16, 1985

a	N 0 25'47" W	44.85'	n	N 36 31'43" E	88.77'
b	N 0 25'47" W	366.20'	o	N 41 34'01" E	55.09'
e	N 85 34'13" E	96.55'	p	N 55 17'26" E	51.23'
f	N 85 34'13" E	251.07'	q	N 73 43'24" E	52.78'
g	S 1 47'32" E	55.24'	r	S 83 48'19" E	67.32'
h	S 22 38'57" W	144.08'			
i	S 42 51'28" W	161.52'			
j	S 38 35'14" W	280.64'			
k	N 18 42'11" W	103.19'			
l	N 22 00'22" W	87.14'			
m	N 36 31'43" E	110.0'			

Southwest Corner
Section 23

State Route 281

ACREAGE WAS REVISUED FROM 2.469 AC TO 2.238 ACRES
 FEB. 8, 2021



02-23-32A