

West Qtr. Corner
Section 12

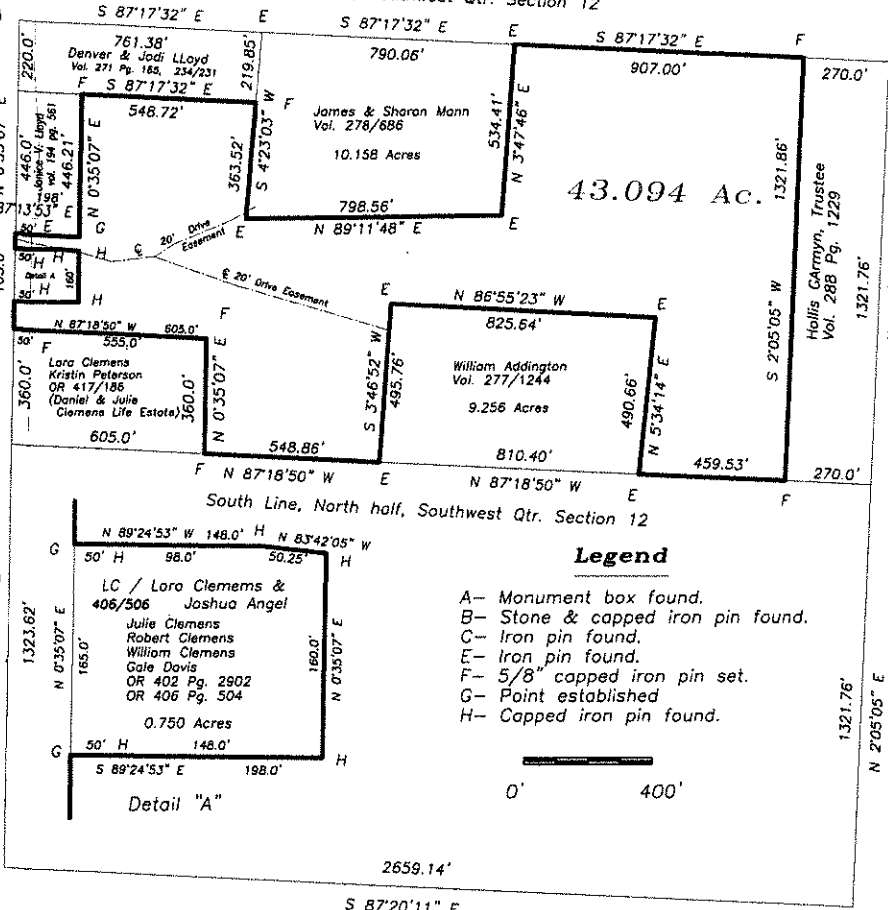
North Line, Southwest Qtr. Section 12

Easement to State of Ohio
Vol. 170 Pg. 54 Vol. 170 Pg. 58
Vol. 169 Pg. 100

Sw Corner
Nw 1/4
Sw 1/4

State Route 66

Sw Corner
Section 12



Ctr. of
Sec. 12

East Line, Southwest Qtr.

Easement Schedule

General Telephone Vol. 220 Pg. 249
Vol. 220 Pg. 251

Toledo Edison Co.

Vol. 220 Pg. 903
Pg. 904, Pg. 905
Vol. 223 Pg. 496
Vol. 223 Pg. 497

I hereby certify that I did perform this survey and that it is correct to the best of my knowledge and belief.

9-25-19

Thomas J. Henry
Registered Surveyor No. 6787

South Qtr. Corner
Section 12

Allen Road

Plat of Survey

Being a part of the North half (1/2) of the Southwest quarter (1/4) of Section 12, Township 5 North, Range 4 East, Tiffin Township, Defiance County, Ohio.

For... Janice V. Lloyd

Vol. 246 Pg. 78
Vol. 246 Pg. 197

